

# DOUBLE DIODE

# EB34

Double diode with separate cathodes.  
Each section is internally screened.

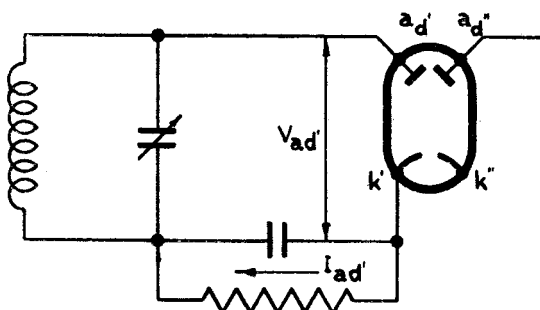
## HEATER

This valve is suitable for DC/AC operation.

$V_h$	6.3	V
$I_h$	0.2	A

## CAPACITANCES

$C_{ad'-k}$	4.5	$\mu\mu F$
$C_{ad''-k}$	4.5	$\mu\mu F$
$C_{ad'-ad''}$	0.5	$\mu\mu F$



## LIMITING VALUES

$V_{ad'}$ max.	200	V
$V_{ad''}$ max.	200	V
$I_{ad'}$ max.	0.8	mA
$I_{ad''}$ max.	0.8	mA
$V_{h-k'}$ max.	75	V
$V_{h-k''}$ max.	75	V
$R_{h-k'}$ max.	20,000	ohms
$R_{h-k''}$ max.	20,000	ohms
$V_{ad'}$ max. ( $I_{ad'}=0.3\mu A$ )	-1.3	V
$V_{ad''}$ max. ( $I_{ad''}=0.3\mu A$ )	-1.3	V
$V_{k'-k''}$ max.	50	V



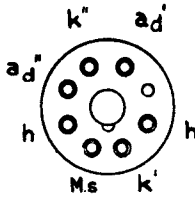
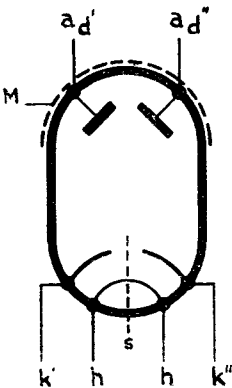
# EB34

## DOUBLE DIODE

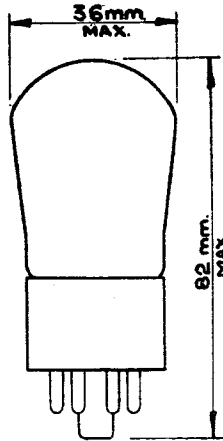
Double diode with separate cathodes.  
Each section is internally screened.

ARRANGEMENT OF ELECTRODES  
AND BASE CONNECTIONS

DIMENSIONS



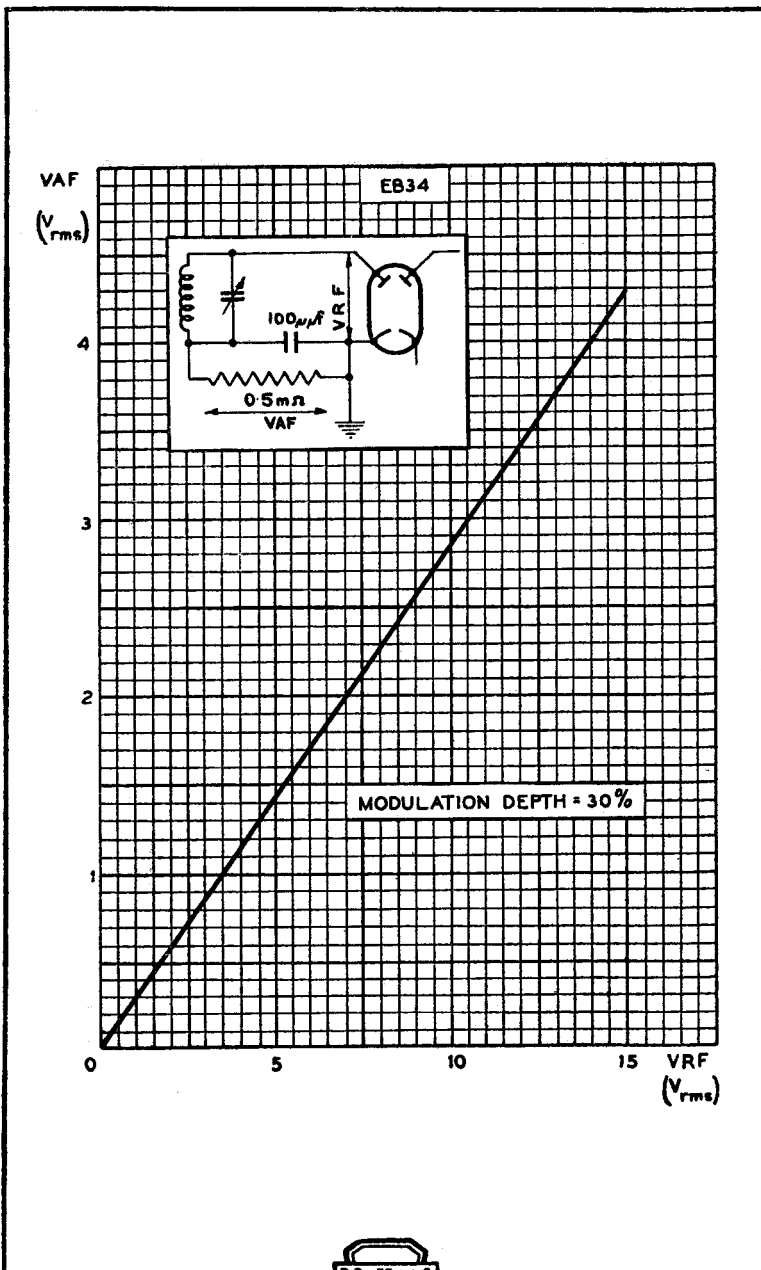
OCTAL BASE



# DOUBLE DIODE

# EB34

Double diode with separate cathodes.  
Each section is internally screened.



# EB34

## DOUBLE DIODE

Double diode with separate cathodes.  
Each section is internally screened.

