

Netzröhre für GW-Heizung
 indirekt geheizt
 Parallelspeisung
 DC-AC-Heating
 indirectly heated
 connected in parallel

TELEFUNKEN

GZ 34

Zweiweg-
 Gleichrichter
 Fullwave rectifier

Vorläufige technische Daten · Tentative data

U_f	5	V
I_f	1,9	A

Betriebswerte · Typical operation

C-Eingang ($f = 50$ Hz) · Capacitor input

$U_{Tr\text{eff}}$	2×300	2×350	2×400	2×450	2×500	2×550	V
I_-	250	250	250	250	200	160	mA
C	60	60	60	60	60	60	μF
R_f	2×75	2×100	2×125	2×150	2×175	2×200	Ω
U_-	330	380	430	480	560	640	V

Drossel-Eingang ($f = 50$ Hz) · Choke input

$U_{Tr\text{eff}}$	2×300	2×350	2×400	2×450	2×500	2×550	V
I_-	250	250	250	250	250	225	mA
L	10	10	10	10	10	10	H
R_f	0	0	0	0	0	0	Ω
U_-	250	290	330	375	420	465	V



Grenzwerte · Maximum ratings

C-Eingang (f = 50 Hz) · Capacitor input

$-U_{asp}$	1500	V
I_{asp}	750	mA
C	60	μF

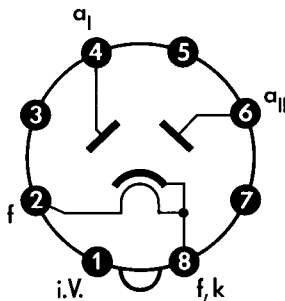
$U_{Tr eff}$	2×300	2×350	2×400	2×450	2×500	2×550	V
$I_{=}$	250	250	250	250	200	160	mA
$R_i^{1)}$	2×50	2×75	2×100	2×125	2×150	2×175	Ω

Drossel-Eingang (f = 50 Hz) · Choke input

$-U_{asp}$	1500	V	
I_{asp}	750	mA	
$U_{Tr eff}$	2×500	2×550	V
$I_{=}$	250	225	mA

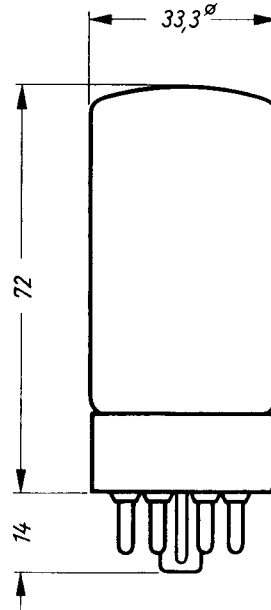
¹⁾ Minimalwert · minimal value

Sockelschaltbild
Base connection



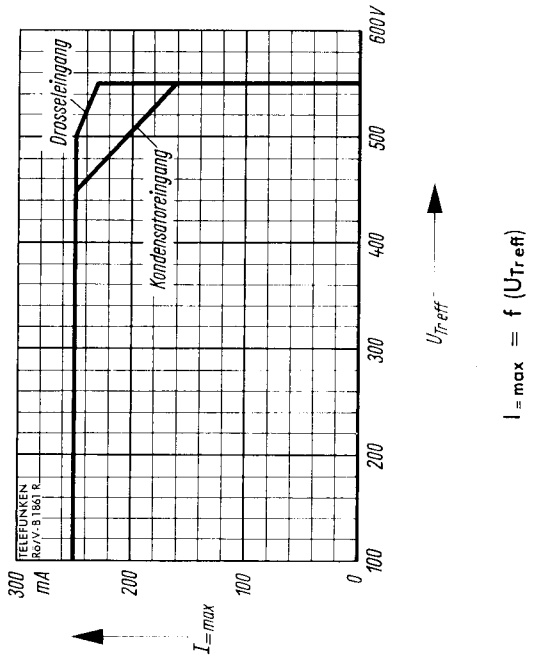
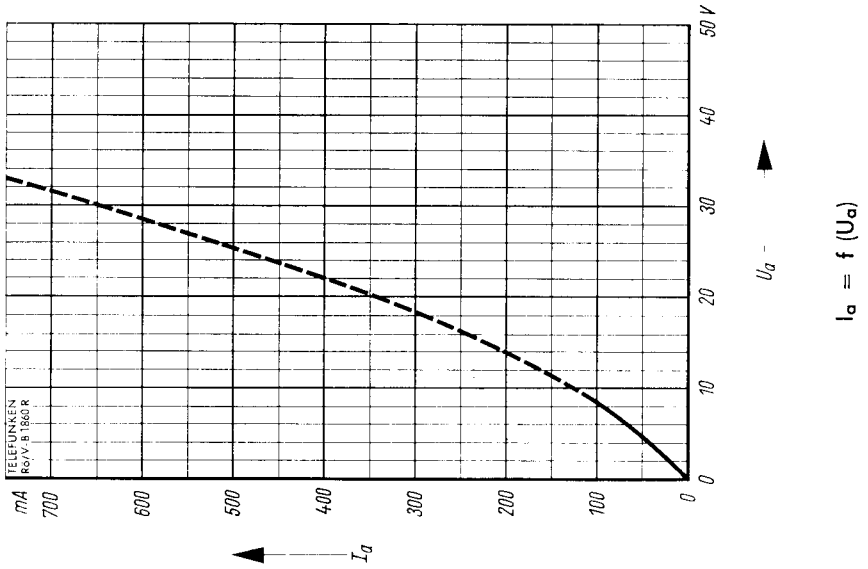
Oktal
Betriebslage beliebig
Operation position any

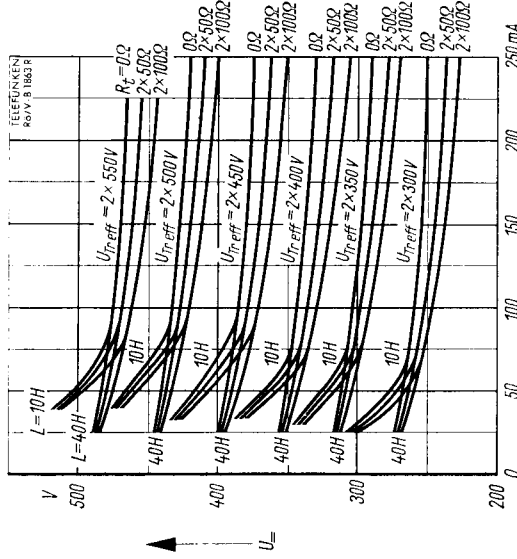
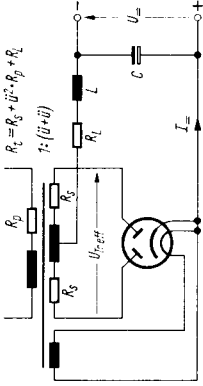
max. Abmessungen
max. dimensions



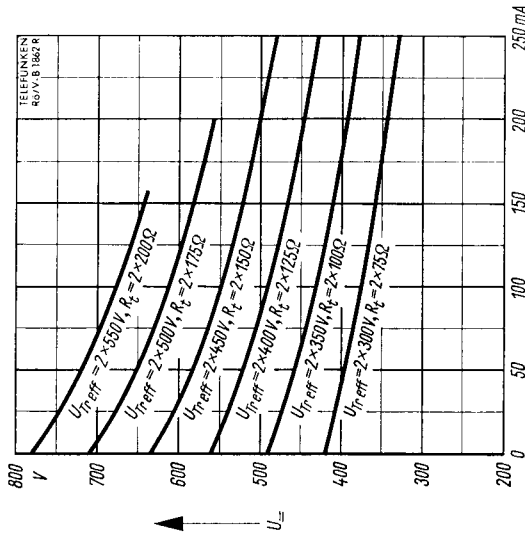
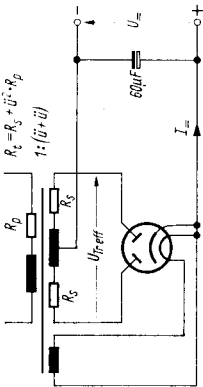
Gewicht · Weight
max. 45 g







Drossel-Eingang · Choke input
 $L = 10$ bzw. $40 H$
 $C = 4 \dots 60 \mu F$



C-Eingang · Capacitor input

