

MARCONI VALVES

MARCONI VALVES

for use with 4-volt Accumulator.

TYPE S 410

SCREEN GRID, HIGH-FREQUENCY AMPLIFYING VALVE.



Approximate Overall Dimensions.

136 × 44 m/m.

The S 410 is a specially designed high frequency amplifying valve having four electrodes, in which the inter-electrode capacity effect so detrimental to high frequency amplification has been nullified by the introduction of a screening grid. The anode is connected to a terminal on the top of the valve and the screen grid to the ordinary anode pin of the valve cap.

When used in a suitable circuit, a greater magnification per stage can be obtained than when using ordinary three electrode valves in a stabilised circuit.

A typical adjustment of electrode potentials is given below.

Anode Volts	Negative Grid Bias Volts.	Screen Grid Volts
120	0 to 1½	80

Filament Volts	4.0 max.
Filament current	0.1 amp.
Anode Volts...	...	100 to 150 max.	
Screen Grid Volts	...	60 to 90 max.	
*Amplification Factor	...	180	
*Impedance	...	200,000 ohms.	
*Normal Slope9 Ma/v.	
<i>*At Anode Volts 120, Screen Grid Volts 80, Grid Volts 0 to -1.</i>			

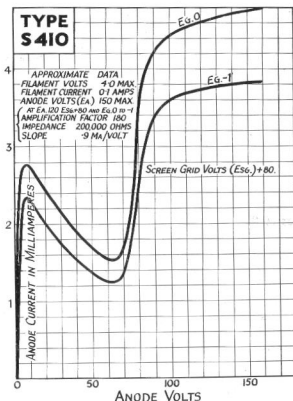
Price, 22/6

The valve in the purple box

MARCONI VALVES

MARCONI VALVES

TYPE S 410



Characteristic Curve of Average S 410 Valve.

The valve in the purple box