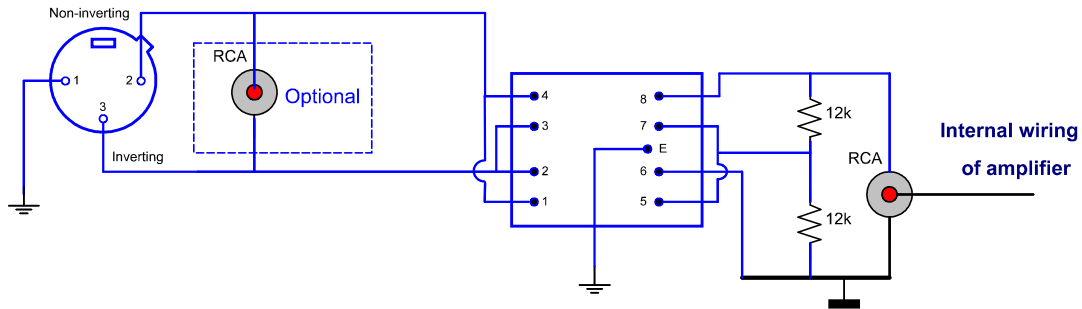


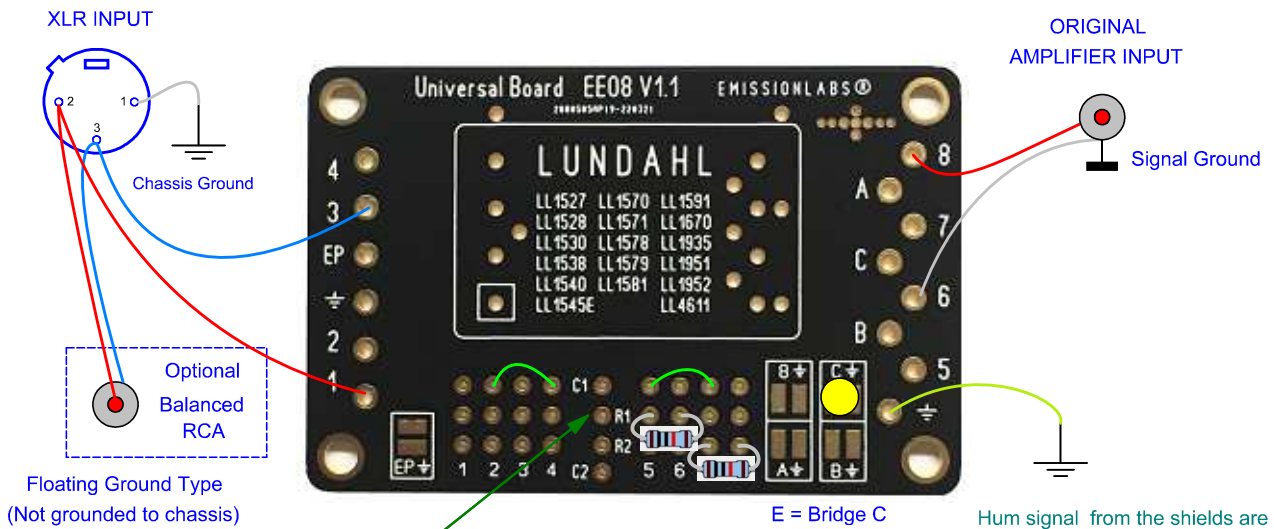
LL1540



ADDING XLS CONNECTOR TO AMPLIFIER WITH RCA CONNECTION (FAT WIRE IS AMPLIFIER CHASSIS)

ADDED BALANCED RCA CONNECTOR IS OPTIONAL. MUST BE FLOATING GROUND TYPE

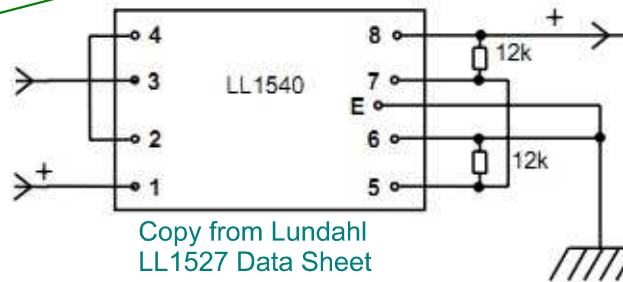
BLUE = ADDED PARTS. BLACK IS EXISTING PARTS.



Bandwidth 5Hz...50kHz. @0.2dB

R1 = R2 = 12k

Input Impedance: 24k



Copy from Lundahl LL1527 Data Sheet

Hum signal from the shields are carried to CHASSIS ground, not to SIGNAL Ground. THIS is the principle of transformer shielding.

A chassis ground connection is made with a separate wire. So to make sure, hum does not mix with signal.

A yellow-green wire indicates this function.

This is an example of correct wiring. When doing so with loose wires, without PCB, the same can be achieved of course. Only, mistakes can slip in quickly, if the simplified schematic from above is taken.

LL1540 is a high impedance, high level input transformer, with excellent low frequency range, down to 5Hz. It has internal shields for best noise rejection. Windings should be in series. Low distortion at high signal, with mu-metal core.

Document Title:	Adding XLR connector to RCA Amplifier, using LL1540, 1:1		
Date created:	18.02.2023	Last Revision:	
Pages:	1	of	1
Created by:	Dipl. Ing. Jac van de Walle www.jacmusic.com (Copyright)		